

Tyrrell

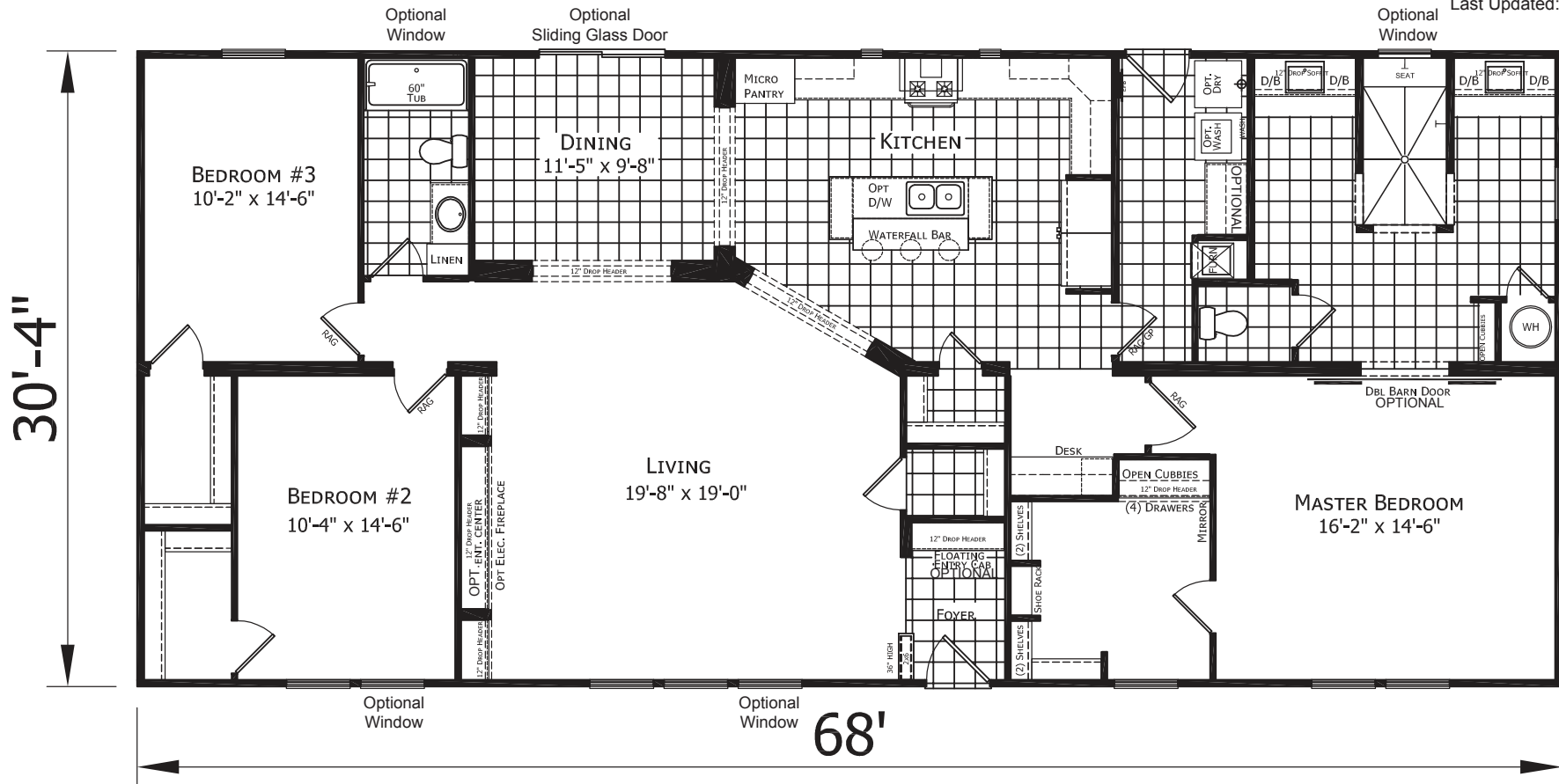
Dutch Elite Housing Series



Factory Expo
 "Factory Direct Pricing" HOME CENTERS

3 Bedroom, 2 Bath
Approx. 2,062 Sq. Ft.

Last Updated: 3-27-19



NOTE: Loaded with contemporary features, the Tyrrell model includes the **Somerset Upgrade Package**, ask your housing consultant for details.

I authorize Factory Expo Homes to build my house, per this plan.
 X _____
 Customer Signature/Date

1-800-504-3238 www.fbhexpo.com 1-800-504-3238 www.fbhexpo.com 1-800-504-3238

Important: Due to our policy of continuing improvement, all information in our brochures may vary from actual home. The right is reserved to make changes at any time, without notice or obligation, in colors, materials, specifications, processes, and models. All dimensions and square footage calculations are nominal and approximate figures. Please check with your sales person for specific and current information.